

# E-banking – absolutely secure and reliable

## Swissquote Bank Ltd relies on SuisselD

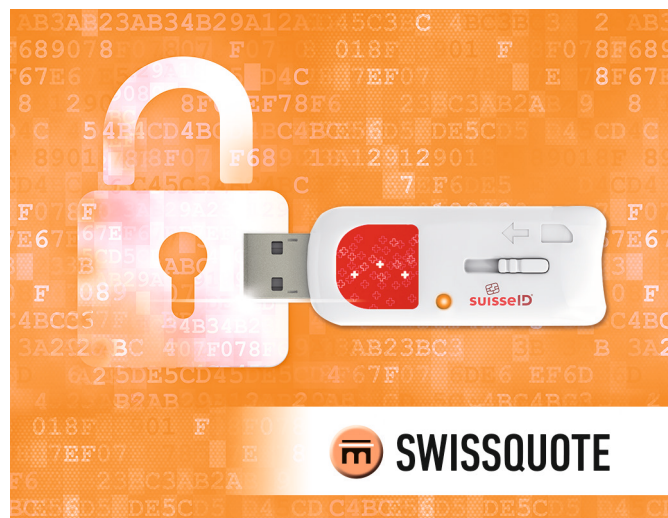
**E-banking needs to be attractive, innovative, flexible and secure – this is enough reason for Swissquote Bank Ltd to secure the access to the most visited financial platform in Switzerland with SuisselD.**

### Guaranteed security for e-banking and online trading

For the leading Swiss provider of financial services there were several reasons for turning to SuisselD: on the one hand, Swissquote can precisely identify its more than 200 000 customers via SuisselD. This means the company knows at all times who is using the services of its online platform. On the otherhand, SuisselD creates satisfied customers: it not only makes the login process for e-banking modern, user-friendly and secure, it also covers additional security requirements. With its financial platform, Swissquote therefore ensures secure access to more than 1.5 million products and more than 60 stock exchanges in over 40 countries. Thanks to SuisselD, private and business customers, asset managers and partners can feel absolutely safe at all times – whether they are carrying out foreign exchange transactions, trading securities, using analysis tools or asking for real-time financial information. In online trading SuisselD is proving its qualities for the first time, but the modern solution, which works according to a procedure defined in the Federal Act on Electronic Signatures (ZertES), has been established for a long time in the everyday business dealings of other security-conscious industries.

### Added value for Swissquote customers

With SuisselD the online bank achieves two goals at the same time: on the one hand, the modern authentication solution for the login increases user friendliness. This is because SuisselD is an alternative to the Level 3 card (TAN list). On the other hand, SuisselD enables transactions to be confirmed online. Here the customers authenticate themselves again and therefore increase quality and security. For Swissquote customers there is another advantage: with the new solution they are given a universal password which they can use for many other SuisselD applications.



### SuisselD as a factor of success for Swissquote

For Swissquote the advantages of SuisselD were already seen in the starting period of cooperation: the number of visitors to the Swissquote Lounges multiplied and the interest in SuisselD was huge. As a result, Swissquote benefited from a higher number of accounts being opened. The high-quality authentication solution with SuisselD as part of the Swissquote login proved an immediate factor of success. As an online bank, digital processes are close to the heart of Swissquote. The integration of the electronic signature with SuisselD will therefore also remain an important theme in the future alongside the SuisselD Mobile Service of Swiss Post.



SuisselD is a registered trademark of the State Secretariat for Economic Affairs SECO.

**SWISS POST**

## Advantages for everyone involved

### Security for the bank

- All customers are identified personally before receiving SuisselD by presenting their passport documents.
- With its strict authentication process, SuisselD ensures the highest credibility.
- With the services of SuisselD the business processes become faster and more efficient.
- The electronic signature provided with SuisselD is legally valid.

### Simple for IT

- SuisselD can be integrated easily and smoothly into any IT architecture.
- Swiss Post provides corresponding instructions and additionally offers advice on-site if necessary.
- With Swissquote the IT development measures are not required for authentication.
- With SuisselD the access management always remains up to date – without any additional work.
- Since SuisselD is standardised, it provides high investment security.

### Time-saving for employees

- With Swissquote there is no work required for the identification of new customers.
- SuisselD prevents media disruptions and saves time – a reason for the high level of acceptance of SuisselD among the Swissquote employees.

### Beneficial for bank customers

- The ordering process and use of SuisselD are well-developed and user-friendly.
- The universal password of SuisselD can also be used for other applications.
- With the SuisselD Mobile Service customers can also log in securely on mobile devices such as tablets and smart phones.
- For questions Swiss Post provides a professional helpdesk.

**«With the SuisselD solution we do not have any development or running costs for our own electronic authentication system. The thing that impressed me most, however, is that the SuisselD system can be integrated smoothly into any IT infrastructure.»**

Giuseppe M. Tafuro, Director,  
Branch Manager, Swissquote Bank Ltd



### Swissquote Bank Ltd

The leading provider of online financial services offers innovative solutions and analysis tools for the different needs and requirements of its customers. On its user-friendly platform it offers various online trading services and also solutions for eForex, ePrivate Banking, mortgage service eHypothek and flexible savings accounts. In addition to the reasonably priced service for private customers, Swissquote also offers special services for independent asset managers and corporate clients. Swissquote is listed on the SIX Swiss Exchange and possesses a banking licence. It is subject to the Swiss Financial Market Supervisory Authority FINMA and is a member of the Swiss Bankers Association.

Swissquote Bank Ltd  
Chemin de la Crétaux 33  
1196 Gland  
[www.swissquote.ch](http://www.swissquote.ch)



### SuisselD

SuisselD is the Swiss standard for digital identity. It allows people to prove their identity without any doubt online and to sign legally valid contracts electronically. It is therefore a digital passport and signature.

In your online services you use SuisselD to reliably identify customers, partners and employees. And processes which require a handwritten signature are handled entirely electronically – not only in your online services but also internally in your company.

You will find more information about SuisselD at  
[www.swisspost.ch/suisseid](http://www.swisspost.ch/suisseid)

Swiss Post Solutions Ltd  
Digital Trust Services  
Sägereistrasse 25  
8152 Glattbrugg  
Switzerland

Telefon +41 44 838 36 00  
[suisseid@post.ch](mailto:suisseid@post.ch)  
[www.swisspost.ch/suisseid](http://www.swisspost.ch/suisseid)

